

VIKING LINE

Conference on board



All Viking Line vessels have well equipped conference facilities for small and large groups. We offer a wide range of conference package options suitable for all needs. For further information kindly contact our Customer Service & Sales. The professional sales agents at our conference sales department will summarize your request and offer you the most suitable route and vessel. They will help you book your journey and answer all of your questions. Our professional conference center with its qualified staff on board will make sure your meeting is a success. We have the experience and the know-how to meet your needs.

Welcome on board!

Gabriella

Standard equipment

- Data projector in conference rooms B41, B61, S11, S31 and B52
- PC Sound system in all conference rooms.
- PC plasma screen in conference rooms S21 and B51.
- Projection screen
- Flip Charts and white board
- Pens and note pads
- Speakers

Standard equipment, auditorium

- CD/cassette tape player
- DVD player
- Video projector/computer
- Panel board
- Speaker's chair + microphone
- Wireless headset
- Wireless microphone

Additional equipment for the conference rooms and/or the auditorium

- CD/ portable cassette tape player
- Data/video projector
- Extra projection screen
- Extra flip chart
- Document camera
- Hearing loop

Booking via Viking Line Group and Conference department.

Additional conference services

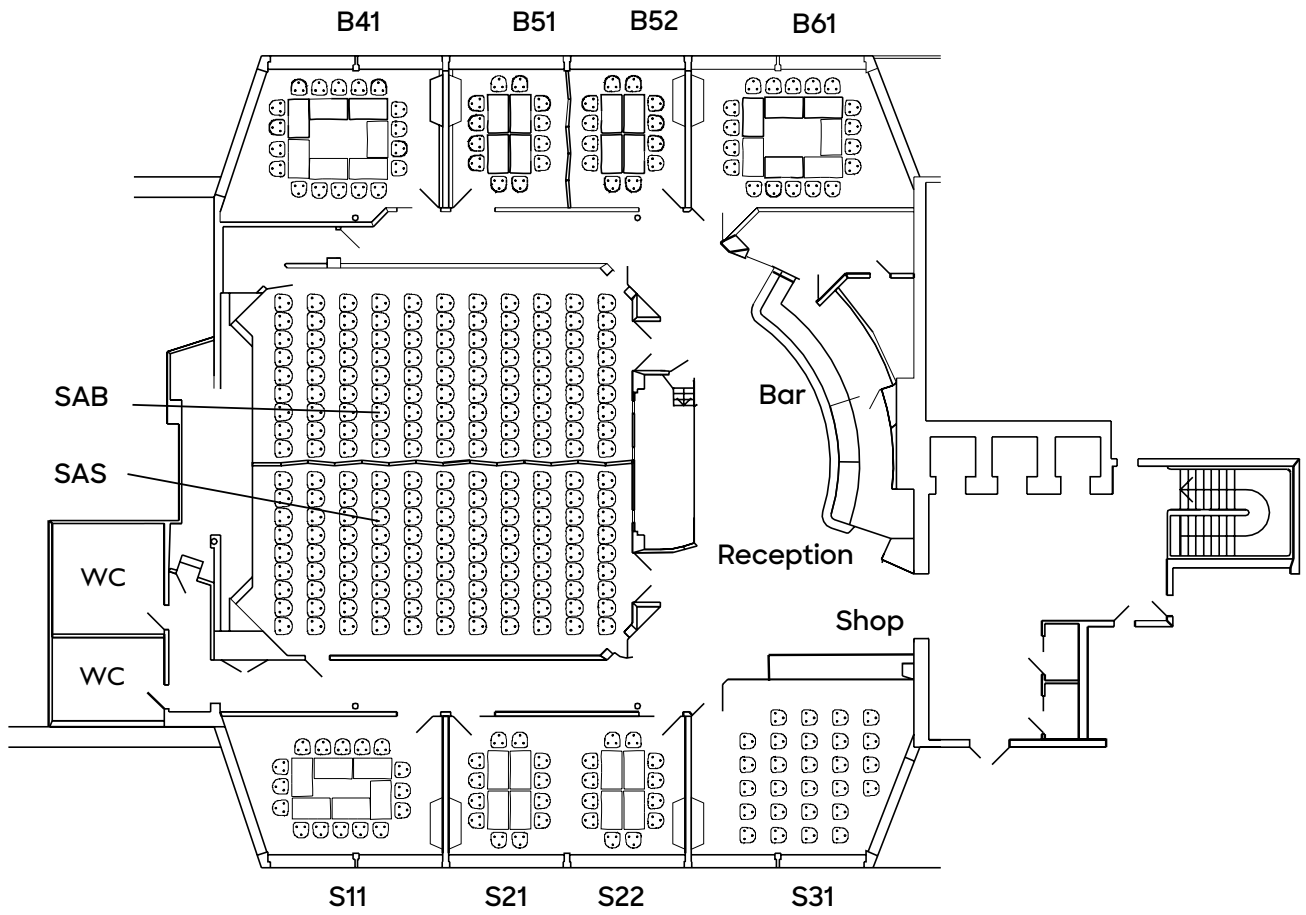
- Copying (additional charges apply)
- Viking Public WLAN

Elevator capacity to the Conference deck

Passenger elevator
120 cm wide and 220 cm deep
Door measurement 85 cm.
Weight capacity 1,000 kg (2,200 lbs.)

Code	Furnishing	Seating capacity	Room Width, Doorway to window	Room Length, Front to back
S31	Classroom	32	470 cm	600 cm
	U Table	18		
	Theatre seating	38		
B41	Boardroom	16	465 cm	590 cm
	Classroom	22		
	U Table	16		
B51	Theatre seating	28	465 cm	390 cm
	Boardroom	14		
	U Table	10		
B52	Boardroom	10	465 cm	390 cm
	Classroom	24		
	U Table	20		
B51+B52	Theatre seating	36	465 cm	790 cm
	Boardroom	16		
	Classroom	24		
B61	U Table	16	470 cm	525 cm
	Theatre seating	32		
	Boardroom	14		
SAS/SAB	Theatre seating (set)	90	640 cm	1280 cm
SAB/SAB	Classroom	60	640 cm	1280 cm
SAS + SAB	Theatre seating (set)	180	1280 cm	1280 cm
SAS + SAB	Classroom	120	1280 cm	1280 cm
S11	Classroom	22	465 cm	570 cm
	U Table	16		
	Theatre seating	14		
S21	Boardroom	28	465 cm	390 cm
	U Table	10		
	Boardroom	10		
S22	U Table	10	465 cm	390 cm
	Boardroom	10		
	Classroom	24		
S21 + S22	U Table	20	465 cm	790 cm
	Theatre seating	36		
	Boardroom	16		

Deck 10 Conference Deck



Viking Cinderella

Standard equipment

- Projection screen
- Flip Chart
- White board
- Pens and notebooks
- Wireless Viking Public Internet connection
- PC projector. Please note that some rooms haven't got PC projectors installed and ready in the room. Always make a note about required PC projector in the conference room booking.

Standard equipment, auditorium

- Projection screen
- Flip charts
- CD player
- DVD player
- PC projector
- Panel board
- Headset (microphone)
- Wireless hand-held microphone

Accessories for the conference rooms and/or auditorium

- Extra projection screen
- Extra flip chart
- PC loudspeakers
- Laptop available for rental, SEK 300
- Document camera

Bookings via Viking Lines Group and Conference department.

Additional conference services

- Copying (additional charges apply)

Additional information

- Speakers in some rooms
- Hearing loop in AU1 and AU2, as well as a portable one
- 6 standing desks for rental, SEK 200/table
- Conference tables 1,350 x 450. The tables can be combined in many different ways. Movable tables and chairs.

Elevator capacity to the Conference Deck 9

Elevator door width: 95 cm
Weight Capacity: 1,000kg (2,200lbs.)

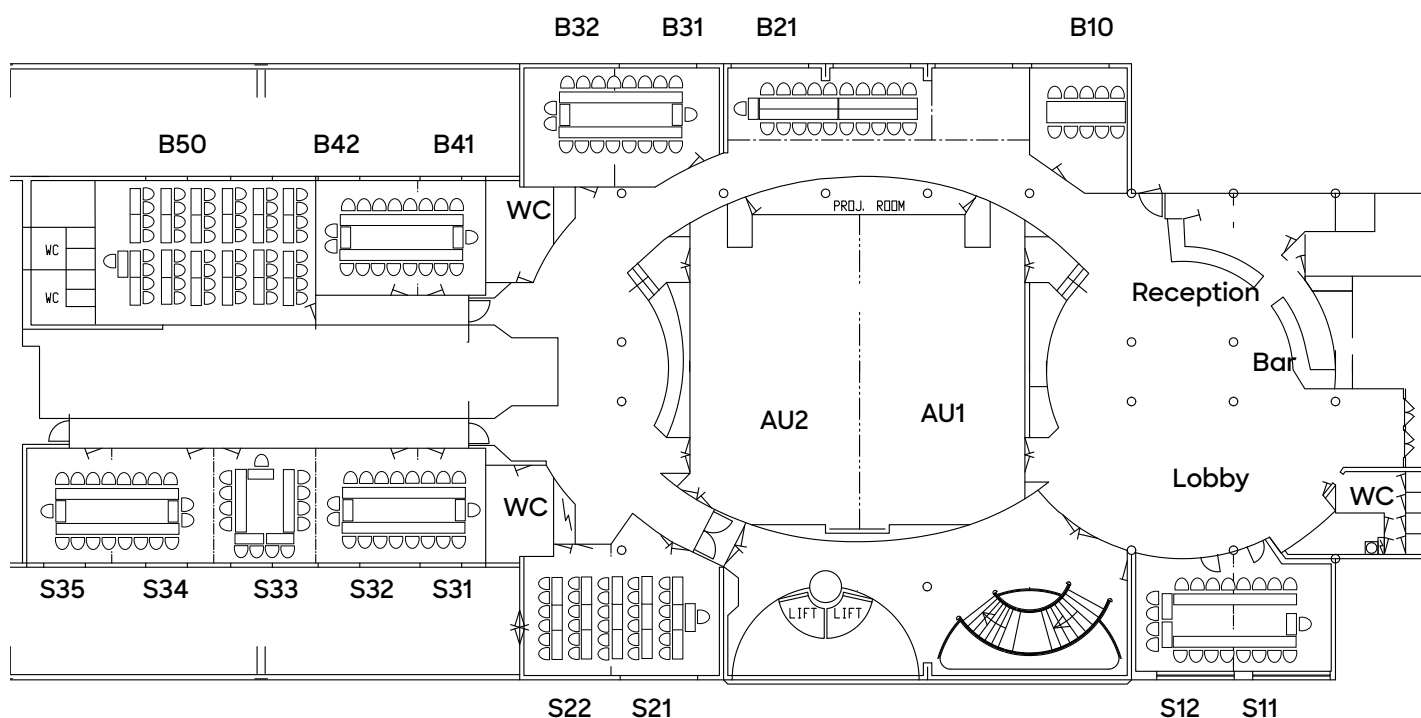
Internet Connections:

Free Wi-Fi.

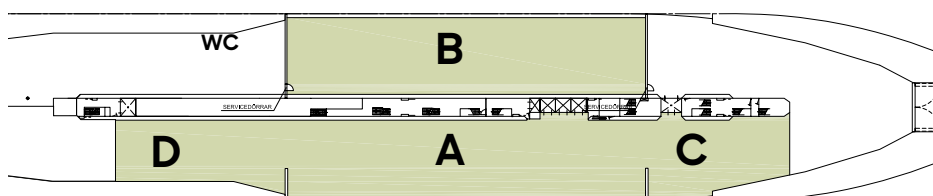
Code	Furnishing	Seating capacity	Room Width, Doorway to window	Room Length, Front to back
B10	Boardroom	10	510 cm	410 cm
B21	Boardroom	17	280 cm	960 cm
B31	Classroom	15	420 cm	490 cm
	U Table	13		
B32	Classroom	13	540 cm	430 cm
	U Table	12		
B41	Boardroom	8	490 cm	320 cm
B42	Classroom	12	490 cm	450 cm
	U Table	12		
B50	Classroom	49	635 cm	1020 cm
S11	Classroom	13	580 cm	450 cm
	U Table	12		
S12	Boardroom	8	520 cm	460 cm
S21	Classroom	13	540 cm	480 cm
	U Table	21		
S22	Classroom	13	540 cm	420 cm
	U Table	12		
S31	Boardroom	8	490 cm	300 cm
S32	Classroom	13	490 cm	480 cm
	U Table	12		
S33	Classroom	13	490 cm	420 cm
	U Table	13		
S34	Classroom	13	490 cm	480 cm
	U Table	12		
S35	Boardroom	8	490 cm	360 cm
AU1	Auditorium (Chairs are fixed)	106	820 cm	1420 cm
AU2	Auditorium (Chairs are fixed)	104	820 cm	1420 cm

Combinations				
B31+B32	Classroom	27	540 cm	930 cm
	U Table	19		
B41+B42	Classroom	25	490 cm	790 cm
	U Table	19		
S11 + S12	Classroom	31	550 cm	930 cm
	U Table	21		
S21 + S22	Classroom	31	540 cm	910 cm
	U Table	21		
S31 + S32	Classroom	27	770 cm	780 cm
	U Table	19		
S31 + S32	Classroom	39	1185 cm	490 cm
+ S33	U Table	27		
S34 + S35	Classroom	27	830 cm	900 cm
	U Table	19	490 cm	480 cm

Deck 9 Conference Deck



Deck 3 Cinderella Event Deck



Cinderella Event deck

Groups and Charter customers are invited to hire parts of the car deck as, for example, a large activity area. The event deck can be used only when the ship is in dock.

Included in the rental price for such a booking is:

- textile coverings for the floor
- drapes for the walls
- ceiling lights
- electricity drawn to two central mains
- Viking Public Internet connections

Additional interior decoration and/or equipment can be ordered, with all costs paid by the customer

The following rules and regulations issued by the Swedish Maritime Administration must be followed when renting any of these four sections, for group and charter customers.

- No vehicles or other methods of transportation containing fuel, propellants, flammable liquids, or dangerous substances may be present on the car deck during the time it is being used for the event.
- The water tight passenger doors (on either side of A and B area) may not be opened during the event. These doors may only be opened when the Cinderella is berthed at her dock or otherwise lies at anchor.

Bookings via Viking Line 3 months in advance. The Event deck must be booked also for the cruise previous and after the event, because of work needed to transform the space for conference needs. Read more at vikingline.se.

Area	Area m ²	Booking information
A	660 m ²	Always first
B	660 m ²	Only in combination with A
C	240 m ²	Only in combination with A
D	350 m ²	Only in combination with A
Total	1910 m ²	

Viking Glory

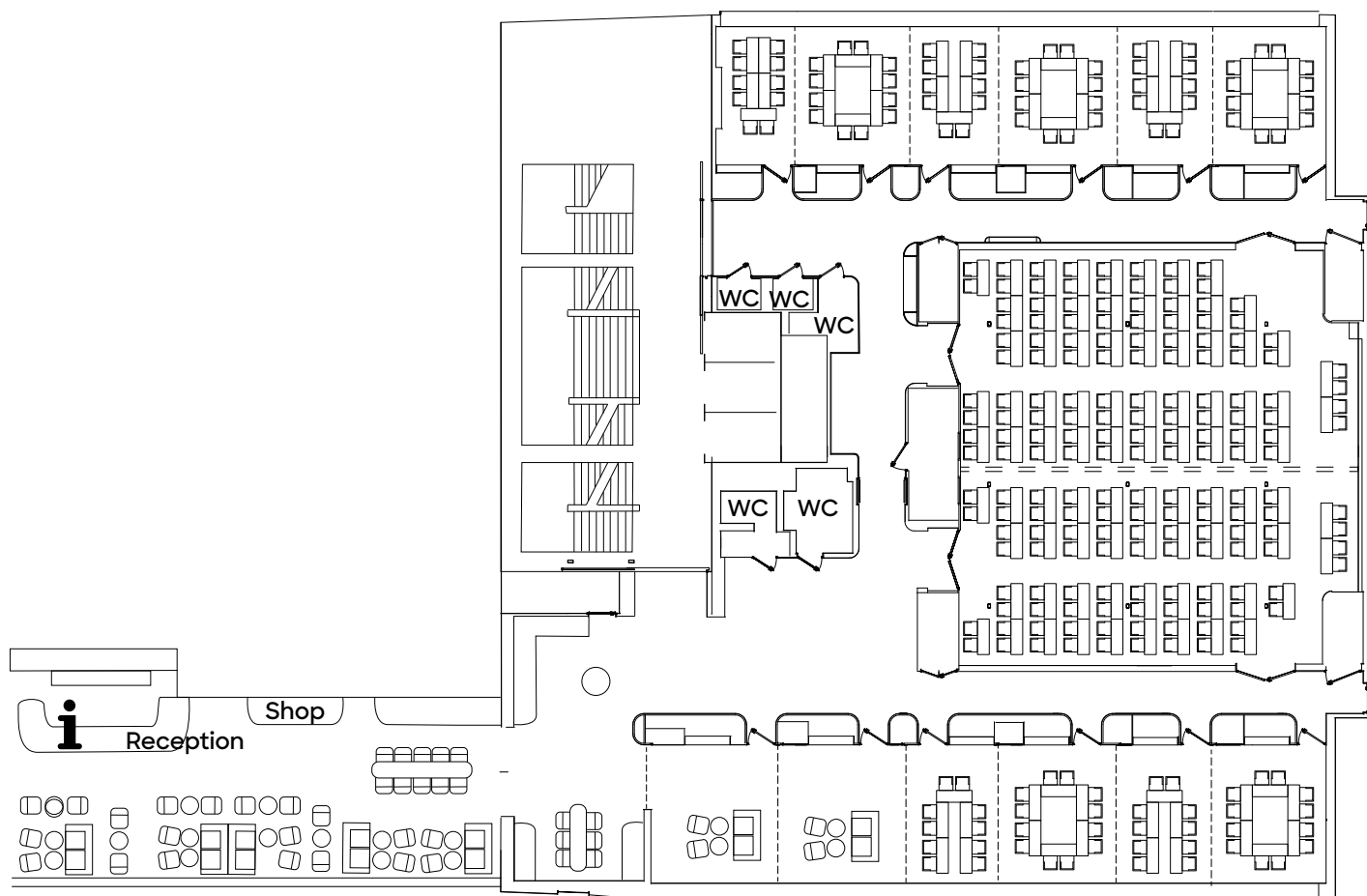
Däck 9 Conference deck



- Flexible conference facilities with spectacular, large Panorama windows.
- Auditorium with up to 250 seats.
- 14 smaller conference rooms, can also easily be combined to a larger space.
- Modern and inspiring work space.
- High-end technical solutions.
- Working conference arrangements for all conference groups.
- Different rooms for different needs, like smaller work spaces and a large auditorium with huge widescreens for excellent visibility.
- Meeting space also outside the traditional conference facilities.
- Perfect for gatherings with activities, entertainment, food and drink.

More information about Viking Glory Conference will be published later.





Viking Grace

Däck 9 Conference deck

Standard equipment

- WLAN
- Loudspeakers
- LCD screen
- Flip chart
- Microphones (optional)
- Pens and note pads

Standard equipment in the auditorium

- Wireless microphones
- Projector and screen
- PC projector

Additional information:

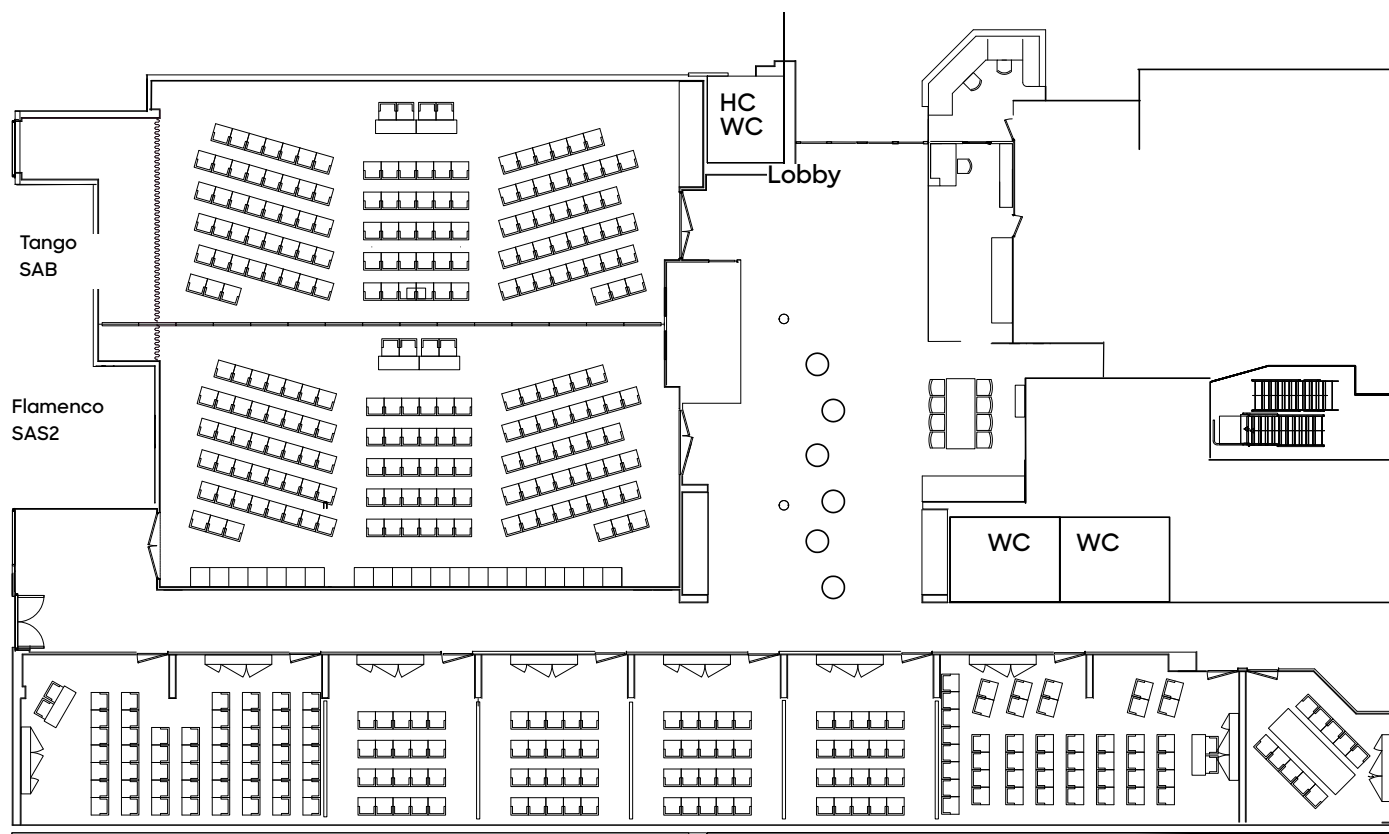
- Possibility to present same audio/video material in several meeting rooms simultaneously
- Adjustable digital sign boards by the meeting rooms
- Total capacity of the conference area: 411 persons
- Speakers in all rooms and the lobby
- Standing desks can be rented for a fee if needed

Elevator capacity to the conference deck:

Door width 120 cm
Weight capacity 2,000 kg.

Code		Furnishing	Seating capacity	Room size	Room length, front to back
S21	Rumba	U Table	14	26 m ²	5.2 x 4.7 m
		Classroom	14		
S22	Boogie	U Table	14	25 m ²	5.2 x 4.7 m
		Classroom	14		
		Boardroom	12		
S23	Jive	U Table	14	25 m ²	5.2 x 4.7 m
		Classroom	14		
		Boardroom	12		
S24	Jazz	U Table	14	25 m ²	5.2 x 4.7 m
		Classroom	14		
		Boardroom	12		
S25	Mambo	U Table	14	25 m ²	5.2 x 4.8 m
		Classroom	14		
		Boardroom	12		
S26	Walz	U Table	14	25 m ²	5.2 x 4.7 m
		Classroom	14		
		Boardroom	12		
S27	Pasodoble	U Table	14	25 m ²	5.2 x 4.7 m
		Classroom	14		
		Boardroom	12		
S28	Foxtrot	U Table	14	25 m ²	5.2 x 4.7 m
		Classroom	14		
S31	Cha cha	Boardroom	10	23 m ²	4.8 x 4.5 m
SAB	Tango	Theatre seating	116		8.2 x 18.2 m
SAS2	Flamenco	Theatre seating	116		7.5 x 16.3 m

Combinations					
S21+S22			30		
S27+S28			30		
SAB +SAS2			Main auditorium	230	
S21 + S22 + S23 + S24 + S25 + S26 + S27 + S28					37.6 x 4.7 m



Rumba
S21

Boogie
S22

Jive
S23

Jazz
S24

Mambo
S25

Waltz
S26

Pasodoble
S27

Foxtrot
S28

Cha Cha
S31

General information

8 conference rooms with seating for 224 participants. A comfortable environment for both large and small groups.

The rooms are equipped with the latest AV-equipment and wireless Internet connections which are centrally located next to the Information desk.

Table dimensions are 1,200x400 mm. They can be combined in different configurations. Please note that B-rooms are measured front to back and the S-rooms from side to side.

The conference department has movable chairs and tables.

Standard Equipment, all rooms

- Video projector
- Projection screen
- OH/document camera
- Flip chart
- VHS-DVD
- Sound and a Public Address system
- WLAN/Ethernet
- Speakers

In the two larger rooms you will also find

- Hand-held microphones/headsets

Conference Lounge

- 3 Info TVs with 42" screens
- WLAN/Ethernet

Internet

On the Viking XPRS wireless connections are available in the conference center, the conference lounge and café. For wireless service the customer must provide laptop with a WLAN card.

Elevator capacity to the conference deck (via the car deck).

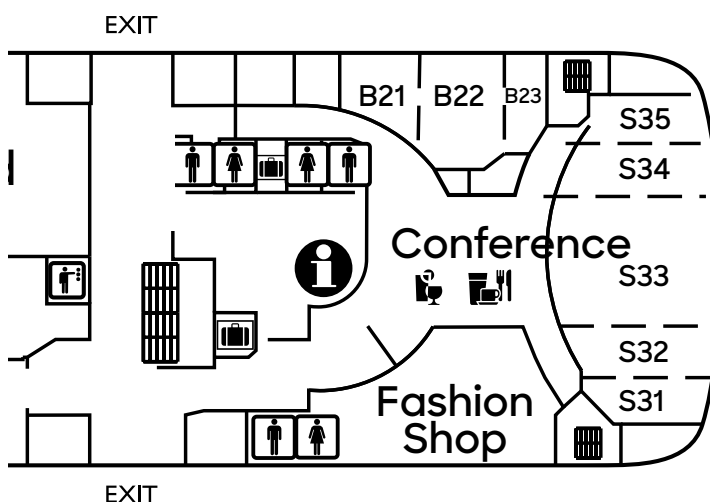
Door width 95 cm

Weight capacity 1,800 kg.

There is a gangway on the same deck as the conference.

Viking XPRS

Deck 7 Conference Deck



Code	Furnishing	Seating capacity	Room size	
B21	Classroom	14	21 m ²	530 x 400 cm
	Boardroom	12		
	Theatre seating	16		
B22	Classroom	35	38 m ²	535 x 410 cm
	Theatre seating	37		
B23	Classroom	10	15.5 m ²	270 x 574cm
	Boardroom	12		
S31	Classroom	12	19.5 m ²	300 x 650 cm
	Boardroom	14		
	Theatre seating	16		
S32	Boardroom	20	22 m ²	260 x 830 cm
	Theatre seating	22		
S33	Classroom	76	92 m ²	920 x 1000 cm
	Theatre seating	88		
S34	Boardroom	20	22 m ²	260 x 830 cm
	Theatre seating	22		
S35	Classroom	12	19.5 m ²	300 x 650 cm
	Boardroom	14		
	Theatre seating	16		

Combinations		
B21 + B22	Theatre seating	52
B21 + B22 + B23	Classroom	59
	Theatre seating	60
S31 + S32	Classroom	35
	Theatre seating	40
S31 + S32 + S33	Classroom	105
	Theatre seating	130
S31 + S32 + S33 + S34 + S35	Classroom	164
	Theatre seating	200

Conference facilities



Amorella



Gabriella



Mariella



Rosella, Båken



Tjärven



Viking Cinderella



Viking Grace



Viking XPRS



VIKING

VIKING LINE

Vikingline.se

Vikingline.fi

Vikingline.ax

Vikingline.ee

Vikingline.de

Vikingline.ru

Sales.vikingline.com